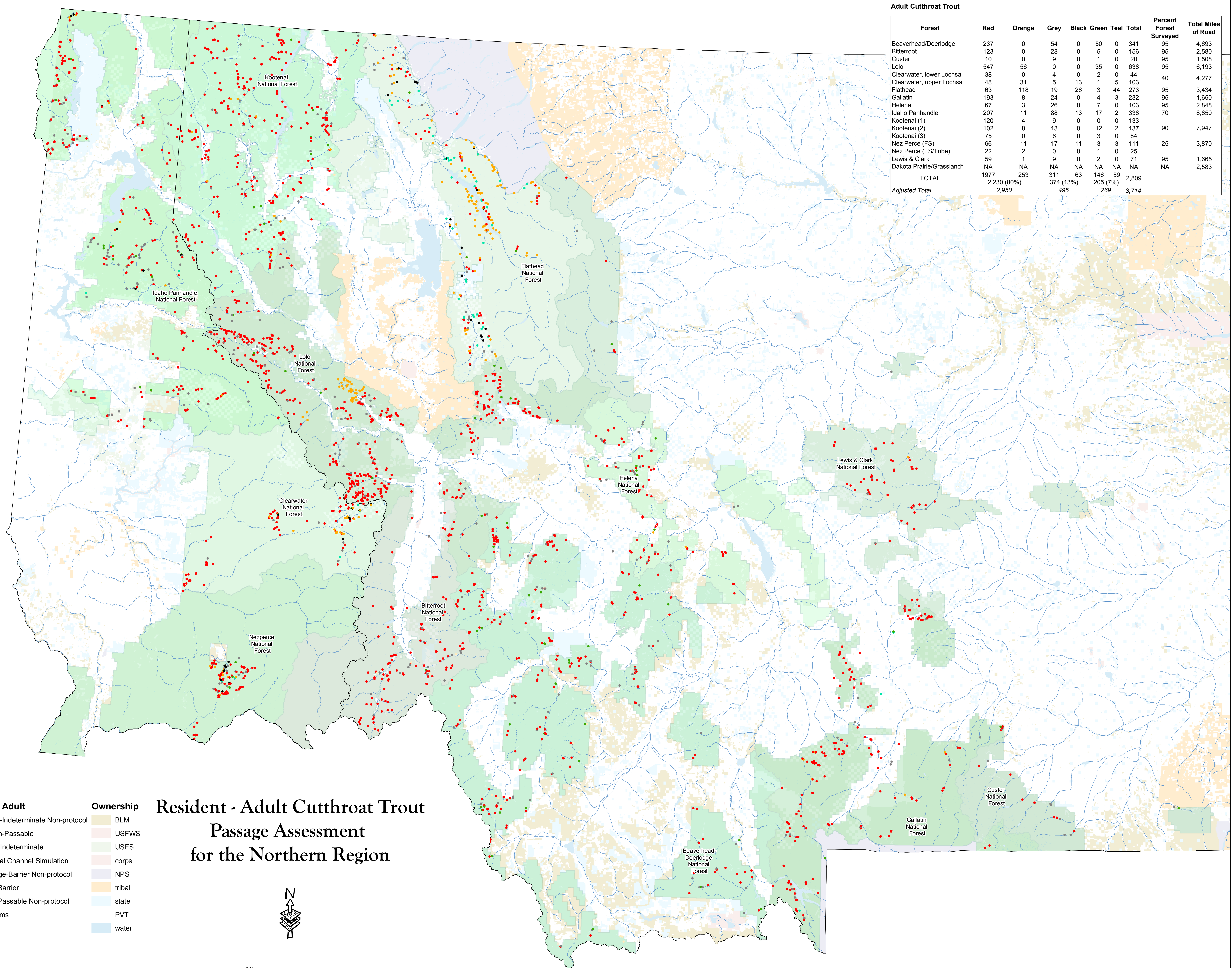


Adult Cutthroat Trout

Forest	Red	Orange	Grey	Black	Green	Teal	Total	Percent Forest Surveyed	Total Miles of Road
Beaverhead/Deerlodge	237	0	54	0	50	0	341	95	4,693
Bitterroot	123	0	28	0	5	0	156	95	2,580
Custer	10	0	9	0	1	0	20	95	1,508
Lolo	547	56	0	0	35	0	638	95	6,193
Clearwater, lower Lochsa	38	0	4	0	2	0	44	40	4,277
Clearwater, upper Lochsa	48	31	5	13	1	5	103		
Flathead	63	118	19	26	3	44	273	95	3,434
Gallatin	193	8	24	0	4	3	232	95	1,650
Helena	67	3	26	0	7	0	103	95	2,848
Idaho Panhandle	207	11	88	13	17	2	338	70	8,850
Kootenai (1)	120	4	9	0	0	0	133		
Kootenai (2)	102	8	13	0	12	2	137	90	7,947
Kootenai (3)	75	0	6	0	3	0	84		
Nez Perce (FS)	66	11	17	11	3	3	111	25	3,870
Nez Perce (FS/Tribe)	22	2	0	0	1	0	25		
Lewis & Clark	59	1	9	0	2	0	71	95	1,665
Dakota Prairie/Grassland*	NA	NA	NA	NA	NA	NA	NA	NA	2,583
TOTAL	1977	253	311	63	146	59	2,809		
Adjusted Total	2,230 (80%)	253	374 (13%)	63	205 (7%)	0	3,714		



**Resident - Adult Cutthroat Trout
Passage Assessment
for the Northern Region**

- Barriers - Adult**
- Black-Indeterminate Non-protocol
 - Green-Passable
 - Grey-Indeterminate
 - Natural Channel Simulation
 - Orange-Barrier Non-protocol
 - Red-Barrier
 - Teal-Passable Non-protocol
 - Streams
- Ownership**
- BLM
 - USFWS
 - USFS
 - corps
 - NPS
 - tribal
 - state
 - PVT
 - water

